

TASCAM

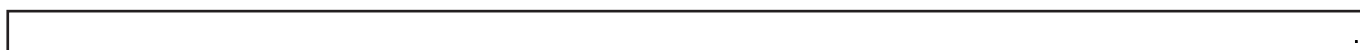
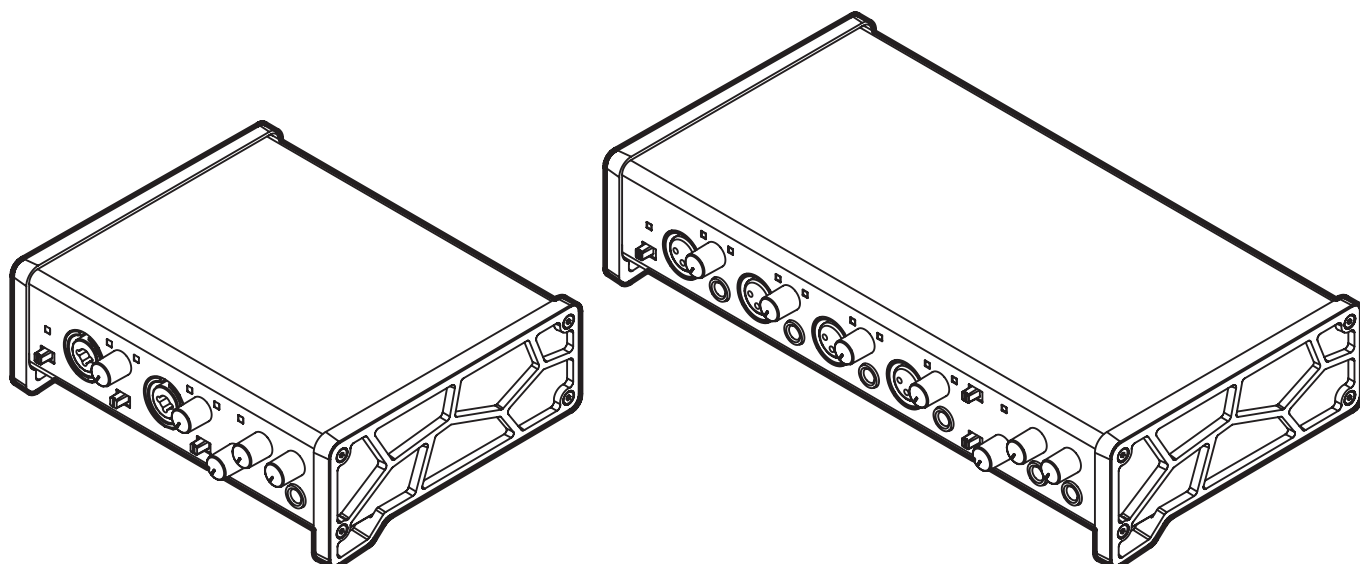
D01236020D

US-2x2


US-4x4




USB

/ MIDI




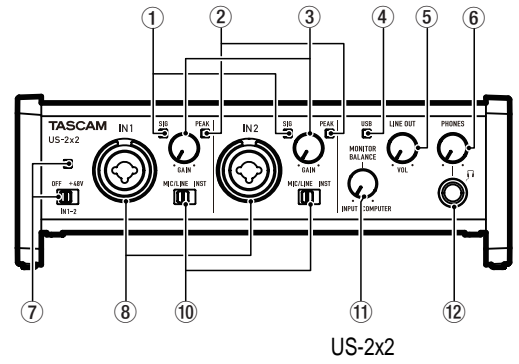
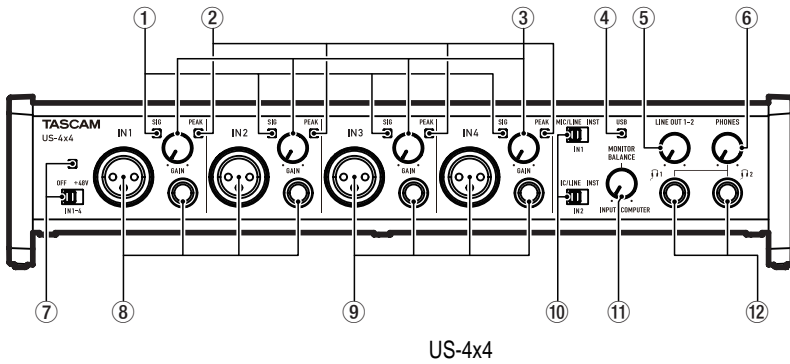
1.	3	SONAR LE	Cubase LE	16
	3		DAW	16
	3		Windows Media Player	16
	TEAC		Mac OS X iTunes	17
2.	4	9.	MIDI	18
	4	10.	19
	5	11.	21
3.	6		21
	6		21
Windows	6		21
Mac OS X	6		21
Apple iOS	6		21
	6		21
	6		22
Windows	6	Windows	22
Mac OS X	7	Mac OS X	22
Gatekeeper	8	iOS	22
	9		22
Windows	9	22
Mac OS X	9	22
4.	10				
	10				
	(US-4x4)				
5.	11				
	11				
	11				
	11				
	11				
	11				
	11				
	11				
	11				
	12				
	12				
	MIDI				
	iOS				
6.	13				
	13				
	13				
7.	15				
	15				
	15				
	15				
8.	16				
	DAW				
	16				

- 24 /96
-
- 1 XLR (.2)
- (.3/ .4)
-
- INST MIC/LINE INST 5
- 6 7.
- MIDI IN /OUT
-
- USB (USB-B, USB 2.0)
- USB
- Lightning to USB Camera Adapter, Apple Inc.
- 
- US-2x2, USB.
- USB
- (TASCAM PS-P520, ., 5) (US-4x4 .)
- Windows, Mac.
- DAW (SONAR LE, Cubase LE) SONAR LE Windows. Cubase LE Windows Mac.
- 1 US-2x2: 2 , US-4x4: 4
- 2 XLR-3-31
- 3 US-2x2: 2 , US-4x4: 4
- 3 US-2x2 6,3 1/4" TRS (MIC/LINE INST MIC/LINE)
- 4 US-2x2: 2 , US-4x4: 4
- 4 6,3 1/4" TRS (MIC/LINE INST INST)
- 5 US-2x2/US-4x4: 2
- 5 IN1-IN2 US—4x4
- 6 6,3 1/4" TRS
- 6 US-2x2: 2 , US-4x4: 4
- 7 6,3 1/4" TRS
- 7 US-2x2: 1 , US-4x4: 2

- PHONES.
- : "OK".
- 
- 
- 
- USB
- iOS
- Apple Inc.

TEAC

- TEAC ([http:// teac-global.com/](http://teac-global.com/)).
- 1. TEAC (<http://teac-global.com/>).
- 2. Downloads
- 
- Other Languages ().
- 3. "Search by Model Name" ().
- 4.



US-4x4

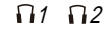
US-2x2

- ① SIG
- SIG IN1/IN2 (US-4x4)
- IN3/IN4 (-32 dBFS).
- ② PEAK
- PEAK IN1/IN2 (US-4x4)
- IN3/IN4 (-1 dBFS).
- ③ GAIN
- IN3/IN4 US-4x4).
- PEAK
- ④ USB
- USB.
- ⑤ LINE OUT
- LINE OUT 1-2.
- ⑥ PHONES
- PHONES (1)
- ⑦
- IN1/IN2 (IN3/IN4 US-4x4).
- ⑧ IN1/IN2 ()
- US-2x2
- XLR TRS MIC/LINE INST
- (INST)
- XLR/TRS US-4x4.
- ⑨ IN3/IN4 ()
- XLR TRS INST.
- ⑩ MIC/LINE INST
- MIC/LINE.
- ⑪ MONITOR BALANCE
- INST.
- MONITOR BALANCE
- (INPUT),
- (COMPUTER),
- +48V

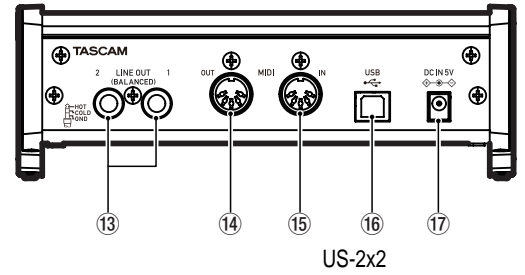
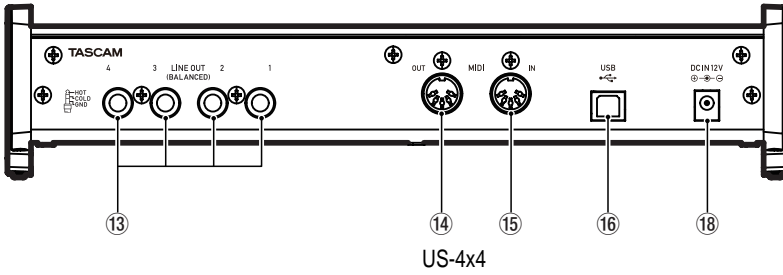
⑫ PHONES

1 2 3 4 (US-4x4).

LINE OUT 1-2.



US-4x4



⑬ LINE OUT ()

LINE OUT 1-2 (1-4 US-4x4)

TRS.

⑰ DC IN 5 (US-2x2)

TASCAM PS-P520 (iOS)

⑭ MIDI OUT

DIN c 5 MIDI

US-2x2
USB,
USB

⑮ MIDI IN

DIN c 5 MIDI

⑯ USB

USB

⑱ DC IN 12 (US-4x4)

(USB 2.0)

12 (GPE248-120200-Z).



US-2x2,

USB.

USB

USB 3.0

USB 2.0 (

480 /)

(),

USB

TEAC (<http://teac-global.com/>).

Windows

- Windows 8 (8.1) 32-
Windows 8 (8.1) 64-
Windows 7 32- SP1
Windows 7 64- SP1
(Windows Vista Windows XP)

Windows USB 2.0

- 2- 2 (x86)

- 2

Mac OS X

- OS X Yosemite (10.10)
- OS X Mavericks (10.9.1)
- OS X Mountain Lion (10.8.4)

Apple Macintosh USB 2.0

- 2- 2

- 2

Apple iOS

- iOS 7

Windows: ASIO2.0, WDM, MIDI
Mac: Core Audio, Core MIDI

TEAC (<http://teac-global.com/>).

Windows,

Mac,

().

iOS

Windows

USB

USB

USB

1.

TEAC (<http://teac-global.com/>).

2.

(zip)

3.

32-

64-

"US—2x2 US—4x4 InstallerXX.exe" ("XX" -),

"US—2x2 US—4x4 Installer.exe"

zip-

"Extract

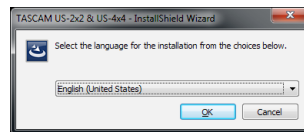
All" ().

4.

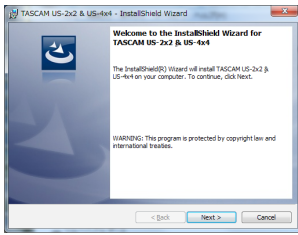
"Run" () " " .

5.

"OK".



6.



"Next" ().

Mac OS X

•
•
: "US-2x2 US-4x4 Installer.dmg" can't be opened because it was not downloaded from the Mac App Store." (AppStore)

7.

"I accept the terms in the license agreement",

"Next".

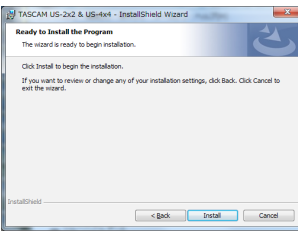


" Gatekeeper" 8

1. TEAC (<http://teac-global.com/>)

8.

"Install" ().



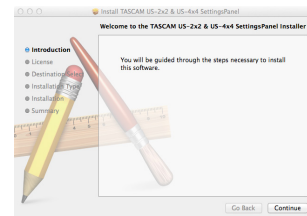
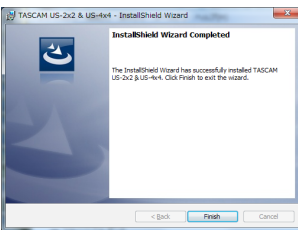
US-2x2_US-4x4
Installer.pkg



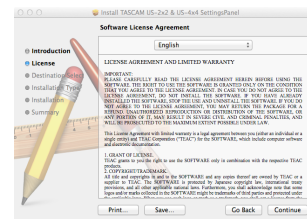
3. "Continue" ().

9.

"Finish" ().

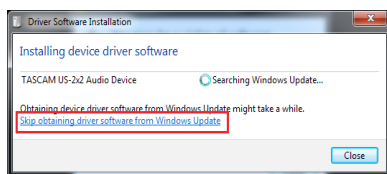


4. "Continue".



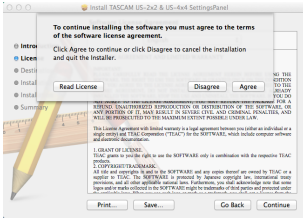
USB
Windows

"Skip obtaining driver software from Windows Update".

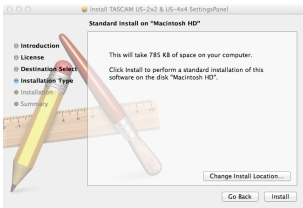


5. "Read License" ()

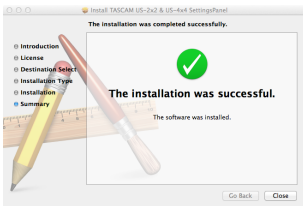
"Agree" ().
"Next".



6. "Install" ().



7. "Close" ().

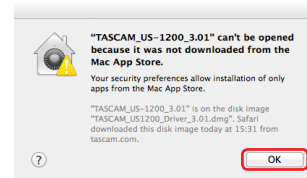


Gatekeeper

Mac OS X,

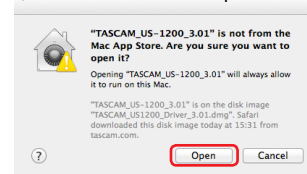
Gatekeeper.

Gatekeeper "Allow applications downloaded from: the Mac App Store" (AppStore)
"US-2x2 US-4x4 Installer.dmg" can't be opened because it was not downloaded from the Mac App Store!"



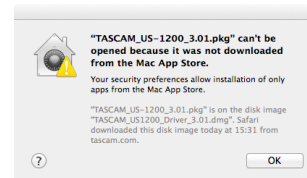
"Open" ().
" " (Ctrl+click)

"US-2x2 US-4x4 Installer.dmg" can't be opened because it was not downloaded from the Mac App Store. Are you sure you want to open it?", "Open".



Gatekeeper "Allow applications downloaded from: the Mac App Store" (AppStore)

"US-2x2_US-4x4 Installer.ding" can't be opened because it was not downloaded from the Mac App Store!",



Gatekeeper "Allow applications downloaded from: the Mac App Store and identified developers" (AppStore),

Gatekeeper "Allow applications downloaded from: the Mac App Store"

"US-2x2_US-4x4 Installer.ding" is an application downloaded from the Internet. Are you sure you want to open it?" (" ")



Gatekeeper

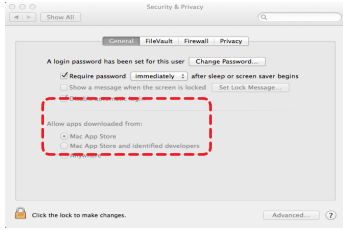
Gatekeeper

"Allow applications downloaded from:" (:)

"General" ()

"Security & Privacy"

(System Preferences).



"Show All"

()

System Preferences,



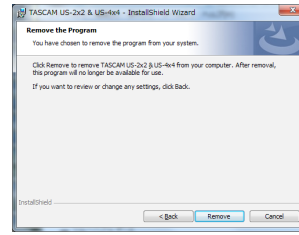
—Q.

Gatekeeper

gatekeeper

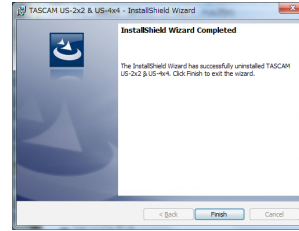


4. "Remove that Program" (), "Remove".



5.

"Finish" ().



Mac OS X

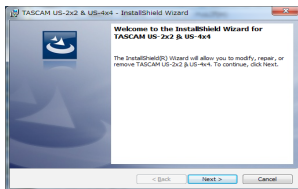
Applications ().

"US—2x2 US—4x4 Settings Panel"

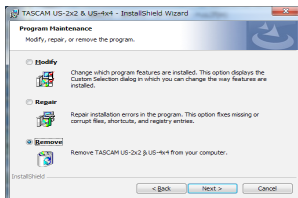
Windows

1. "US-2x2_US-4x4_Installer.exe",

2. "Run" () "Next".



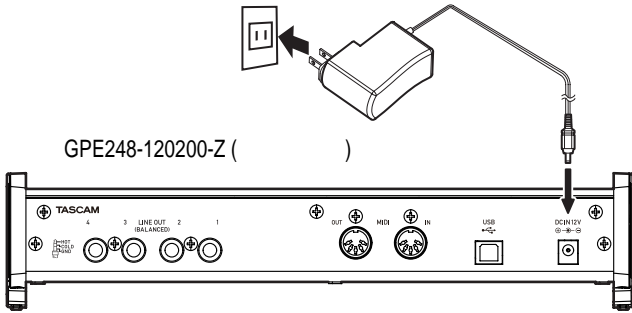
3. "Program Maintenance" (), "Remove" "Next".



■ US-4x4

US-4x4

* US-4x4



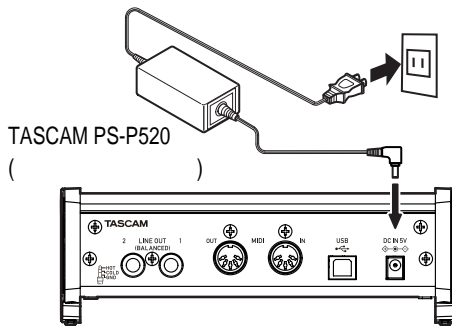
■ US-2x2

US-2x2
USB,

iOS USB

(TASCAM

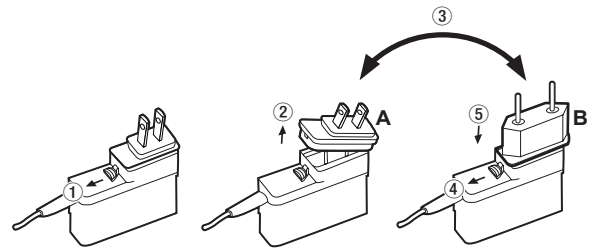
PS-P520, . , 5)



: GPE248-120200-Z US-4x4 TASCAM PS-P520

US-2x2.

(US-4x4)



- ①
- ②
- ③
- ④
- ⑤

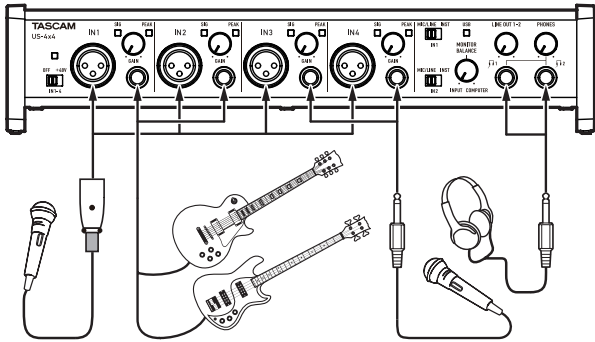


TEAC.

US-4x4.

USB.

GAIN, LINE OUT PHONES



IN1/IN2 (IN3/IN4 US-4x4),

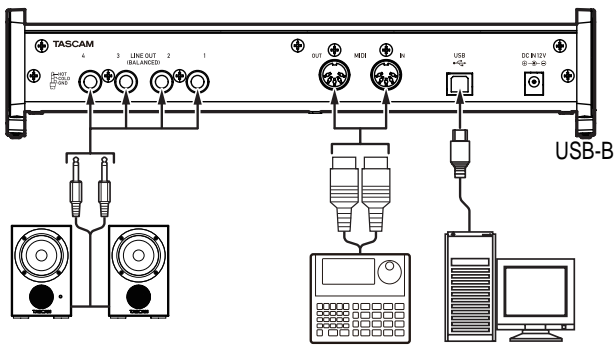
IN3/IN4 US-4x4),

IN1/IN2 (

+48

+48

US-4x4 ()



US-2x2 (4 US-4x4).

+48

LINE OUT PHONES

US-4x4 ()

IN1 IN2,

MIC/LINE INST

INST.

USB (USB 2.0/3.0) USB. USB.

USB-

IN2, IN1 MIC/LINE INST MIC/LINE.

USB- USB

(phono).

) (LINE OUT 1-2,
LINE OUT,

PHONES,

1 2 US-4x4

PHONES

MIDI

MIDI-

Line IN

MIDI-

MIDI IN MIDI OUT,

MIDI- (MTC).

MTC

MIDI

MIDI IN USB

USB.

MIDI IN

MIDI IN

MIDI-

MIDI,

MIDI

Windows Media Player,
"Sound and Audio Devices Properties"
MIDI (MIDI music

playback default device) Microsoft GS Wavetable SW Synth,
MIDI
(LINE OUT [BALANCED] PHONES).

iOS

■ US-2x2

Lightning to USB Camera¹

■ US-4x4

Lightning to USB Camera¹

1

Lightning to USB Camera

2

TASCAM PS-P520 5

③ (Windows)

(latency),

(64, 128, 256, 1024 2048

④

⑤

Line Output 1-2

LINE OUT 1-2 PHONES (1 2 US-4x4)

Line Output 3-4 (

US-4x4)

LINE OUT 3-4

"MONITOR"

Audio

Input On/Off,

USB

MONITOR BALANCE.

LINE OUT 1-2 PHONES.

MONITOR BALANCE

(INPUT),

(COMPUTER),

"Computer 1-2"

"Computer 1-2", USB,

LINE OUT [BALANCED] PHONES.

"Computer 3-4 (

US-4x4)"

"Computer 3-4", USB,

LINE OUT [BALANCED] PHONES.

⑥

30

().

"ON" () :

"OFF" :

USB,

US-2x2

TASCAM PS-P520

(5 .),

USB.

- Direct Monitor 1-2 : Mono
- Direct Monitor 3-4 : Mono
- (US-4x4)
- Audio Input On/Off : All on
- Line Outputs 1-2 : MONITOR
- Line Outputs 3-4 : MONITOR
- (US-4x4)
- ERP2 Setting On/Off :

DAW

SONAR LE Cubase LE

DAW TEAC (<http://teac-global.com/>),

DAW

(DAW)

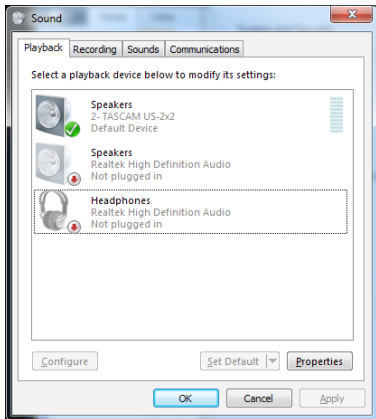
Windows Media Player

Windows 8

1. "Control Panel" ("Hardware and Sound" ("Sound" ("Speakers TASCAM US-2x2" ("Speakers TASCAM US-4x4"), "Set as Default Device" (

Windows 8.1

2. "Control Panel" ()
3. "Hardware and Sound" (), "Sound" ()
4. "Speakers TASCAM US-2x2" ("Speakers TASCAM US-4x4"), "Set as Default Device" ()



5. "Line In TASCAM US-2x2" ("Line In TASCAM US-4x4").

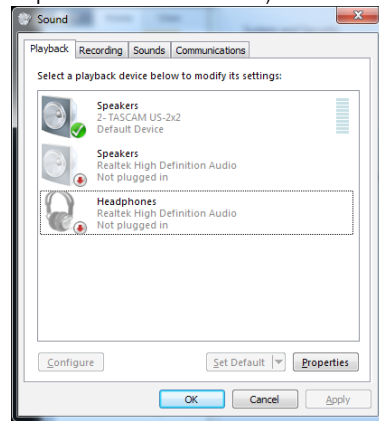
6. Windows Media Player,

Windows Media Player

Windows Media Player.

Windows 7

7. "Control Panel" ("Hardware and Sound" ("Sound" ("Speakers TASCAM US-2x2" ("Speakers TASCAM US-4x4"), "Set as Default Device" ()
8. "Speakers TASCAM US-2x2" ("Speakers TASCAM US-4x4"), "Set as Default Device" ()
9. "Speakers TASCAM US-2x2" ("Speakers TASCAM US-4x4"), "Set as Default Device" ()



10. "Line In TASCAM US-2x2" ("Line In TASCAM US-4x4").

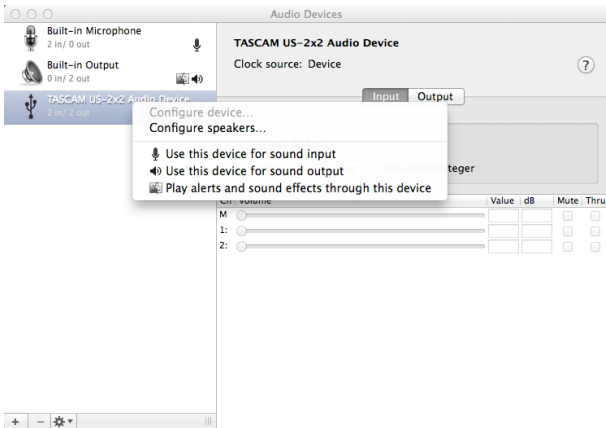
11. Windows Media Player,

Windows Media Player

Windows Media Player.

Mac OS X iTunes

1. "Utilities" "Applications",
"Audio MIDI Setup". "Audio Devices".
2. "TASCAM US-2x2 Audio Device" ("TASCAM US-4x4
Audio Device"),
(control-click).
"Use this device for sound output".
"TASCAM US-2x2 Audio Device" ("TASCAM US-4x4
Audio Device")



"Use
this device for sound input" "TASCAM US-2x2 Audio Device" (
"TASCAM US—4x4 Audio Device").

3. iTunes,

MIDI

Function		Transmit	Recognize	Remarks
Basic channels	When power on	×	×	Thru
	Settable	×	×	
Mode	When power on	×	×	Thru
	Messages	×	×	
	Altered		
Note number	Range	×	×	Thru
Velocity	Note on	×	×	Thru
	Note off	×	×	
Aftertouch	Polyphonic	×	×	Thru
	Channel	×	×	
Pitch bend		×	×	Thru
Control change		×	×	Thru
Program change		×	×	Thru
	Setting range		
System exclusive		×	×	Thru
System common	Position	×	×	Thru
	Song select	×	×	
	Tune	×	×	
System real-time	Clock	×	×	Thru
	Command	×	×	
Other	Local on/off	×	×	Thru
	All notes off	×	×	
	Active sense	×	×	
	Reset	×	×	
Notes				

Mode 1: OMNI ON, POLY Mode 2: OMNI ON, MONO ○ : YES
 Mode 3: OMNI OFF, POLY Mode 4: OMNI OFF, MONO × : NO

TASCAM,

MONITOR BALANCE
INPUT).

-
-
-
- CPU :
- (RAM):
-
-
-
-
-

Windows 7/8

“8 — 16
“Windows 8” “Windows 7” “Windows Media
Player”
1-4 Windows 8 1-3
Windows 7,

Mac OS X

1. Apple "System Preferences..."
2. "Sound".
3. "Output" "US-2x2" "US-4x4".

1.

2.

1.

2.

USB- USB 1.1.
USB 2.0 USB 3.0.
USB-
USB
USB

6

1.

2.

3.

Windows 8

- ① Windows 8
- ② " " " " " "
- ③ " " " " " "
- ④ " " " " " "
- ⑤ " " " " " "

Windows 7

a) "Aero".

① " " "

② " " "

b)

① " " " "

② " " " "

③ " " " " " " " "

④ " " " " " " " "

" " " " " " " "

Mac OS X

① "System Preferences..." Apple

"Energy Saver".

② "Computer sleep" "Never".

③ "Display sleep" "Never".



Mac OS X

Mac



SONAR LE.

SONAR LE.

Help



Cubase LE.

Cubase LE.

Help

- 44.1, 48, 88.2, 96
- 16/24-

(.)
 US-2x2 : IN 1-2
 US-4x4 : IN 1-4
 : XLR-3-31
 (1: Gnd () 2: Hot (+) 3: Cold (-))
 : 2,2
 : -65 dBu (0,0004 Vrms)
 (gain MAX)
 : -8 dBu (0,3090 Vrms)
 (gain MIN)
 : +8 dBu (1,9467 Vrms)
 : 57

(.)
 IN 1-2
 (MIC/LINE INST INST)
 : 6,3
 1/4" TRS (: Hot (+) :)
 : 1
 : -63 dBV (0,0007 Vrms)
 (gain MAX)
 : -6 dBV (0,5015 Vrms)
 (gain MIN)
 : +10 dBV (3,162 Vrms)
 : 57

(.)
 US-2x2 : IN 1-2
 US-4x4 : IN 1-4
 (MIC/LINE INST MIC/LINE)
 : 6,3 1/4"
 TRS (: +, : -, :)
 : 10
 : -53 dBu (0,0017 Vrms)
 (gain MAX)
 : +4 dBu (1,228 Vrms)
 (gain MIN)
 : +20 dBu (7,75 Vrms)
 : 57

(LINE OUT (BALANCED))

US-2x2 : LINE OUT 1-2
 US-4x4 : LINE OUT 1-4
 : 6,3 1/4" TRS
 (: +, : -, :)
 : 110
 : +4 dBu (1,273 Vrms)
 : +20 dBu (7,75 Vrms)

(PHONES)

: 6,3
 1/4" TRS
 US-2x2 : 18 + 18 (THD+N 1%
 32)
 US-4x4 : 45 + 45 (THD+N 1%
 32)

MIDI IN

: 5- DIN
 : MIDI

MIDI OUT

: 5- DIN
 : MIDI

USB

: USB 4
 : USB 2.0 (480 \)

-127 dBu (150 , gain MAX)

IN1-IN4 --> LINE OUT (BALANCED), (HP)

44.1	48	20	+0 / -0,3 (JEITA)	
		20	+0 / -0,3 (JEITA)	
		20	+0 / -0,5 (, JEITA)	
88.2	96	20	+0 / -0,3 (JEITA)	
		40	+0 / -0,3 (JEITA)	
		40	+0 / -0,5 (, JEITA)	
		101	(MIC/LINE LINE OUT, gain MIN, JEITA)	
		0,0003%	(MIC/LINE LINE OUT, 1 , , JEITA)	
		95	(MIC/LINE LINE OUT, 1 , JEITA)	

TEAC (<http://teac-global.com/>).

Windows

Windows 8 (8.1) 32-
 Windows 8 (8.1) 64-
 Windows 7 32- SP1
 Windows 7 64- SP1
 (Windows Vista Windows XP)

Windows USB 2.0

2- 2 (x86)

2

Mac OS X

OS X Yosemite (10.10)
 OS X Mavericks (10.9.1)
 OS X Mountain Lion (10.8.4)

Apple Macintosh USB 2.0

2- 2

2

iOS

Apple iOS 7

Windows: ASIO2.0, WDM, MIDI
 Mac: Core Audio, Core MIDI

US-2x2: USB*
 US-4x4: (GPE248-120200-Z), 12
 * iOS
 (TASCAM PS-P520, , 5).

US-2x2: 2,5
 US-4x4: 5

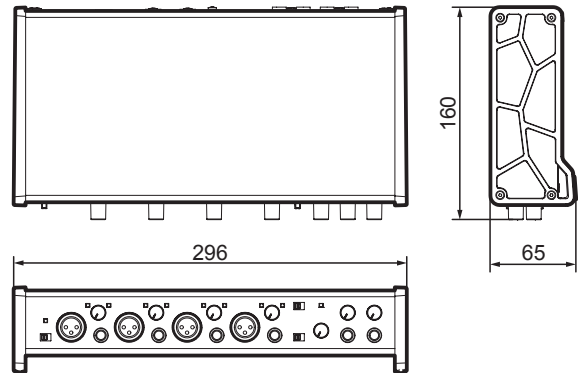
US-2x2: 186 x 65 x 160 ()
 US-4x4: 296 x 65 x 160 ()

US-2x2: 1,1
 US-4x4: 1,6

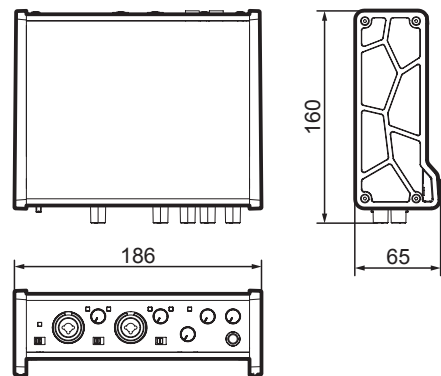
5-35 C

SONAR LE (Windows)
 Cubase LE

■ **US-4x4**



■ **US-2x2**



TASCAM

TEAC CORPORATION

Phone: +81-42-356-9143
1-47 Ochiai, Tama-shi, Tokyo 206-8530 Japan

<http://tascam.jp/>

TEAC AMERICA, INC.

Phone: +1-323-726-0303
1834 Gage Road, Montebello, California 90640 USA

<http://tascam.com/>

TEAC MEXICO, S.A. de C.V.

Phone: +52-55-5010-6000
Río Churubusco 364, Colonia Del Carmen, Delegación Coyoacán, CP 04100, México DF, México

<http://teacmexico.net/>

TEAC UK Ltd.

Phone: +44-8451-302511
2 Huxley Road, Surrey Research Park, Guildford, GU2 7RE, United Kingdom

<http://tascam.eu/>

TEAC EUROPE GmbH

Phone: +49-611-71580
Bahnstrasse 12, 65205 Wiesbaden-Erbenheim, Germany

<http://tascam.eu/>

TEAC SALES & TRADING(SHENZHEN) CO., LTD

Phone: +86-755-88311561~2
Room 817, Block A, Hailrun Complex, 6021 Shennan Blvd., Futian District, Shenzhen 518040, China

<http://tascam.cn/>